

cooler.  
naturally.



IMPROVES THE PERFORMANCE OF AIR COOLED CHILLERS, DRY COOLERS AND REFRIGERATION PLANTS

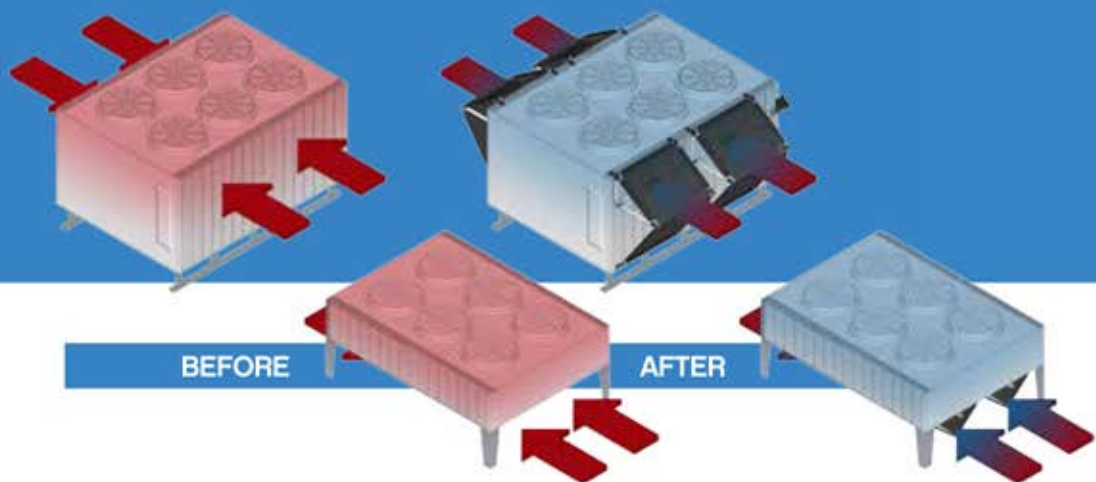


## Water has been used throughout history for its natural cooling effect.

The Ancient Romans were known to have circulated aqueduct water through the walls in some houses to cool them.

For years in the Middle East wet hessian was placed across windows in order to help cool the breezes and for centuries water fountains have been used to make courtyards cooler.

Medieval Persia had buildings with cisterns and used wind towers to cool the buildings during the hotter seasons. The cisterns were large open pools in the centre of courtyards and were used to collect rain water. The wind towers had windows to catch the wind and force it down over the cistern to cool the air.



## How **EcoMesh** works

**EcoMesh's** unique design harnesses two natural cooling effects.

By regulating the spray of a fine water mist onto the mesh we can adjust the adiabatic cooling properties of the **EcoMesh** system. This can cool the ambient air by as much as 28°C!

Coupled with this is the shade provided by the mesh itself instantly reducing the solar radiation impact. This can have a 3–8°C cooling of the incoming air.



# Why install **EcoMesh**?

## extended chiller life ▽

**EcoMESH** extends compressor reliability and life with reduced refrigeration cycle head pressure and discharge temperatures.

## maintenance free ▽

**EcoMESH** is maintenance free, with no need for replacement nozzles or meshes. the system also reduces the maintenance frequency of the cooling unit.

## quick payback ▽

Typical payback period from installation 21 weeks, no more than one cooling season. Peak savings can be as much as 30-40% with average annual savings of 15-25%.

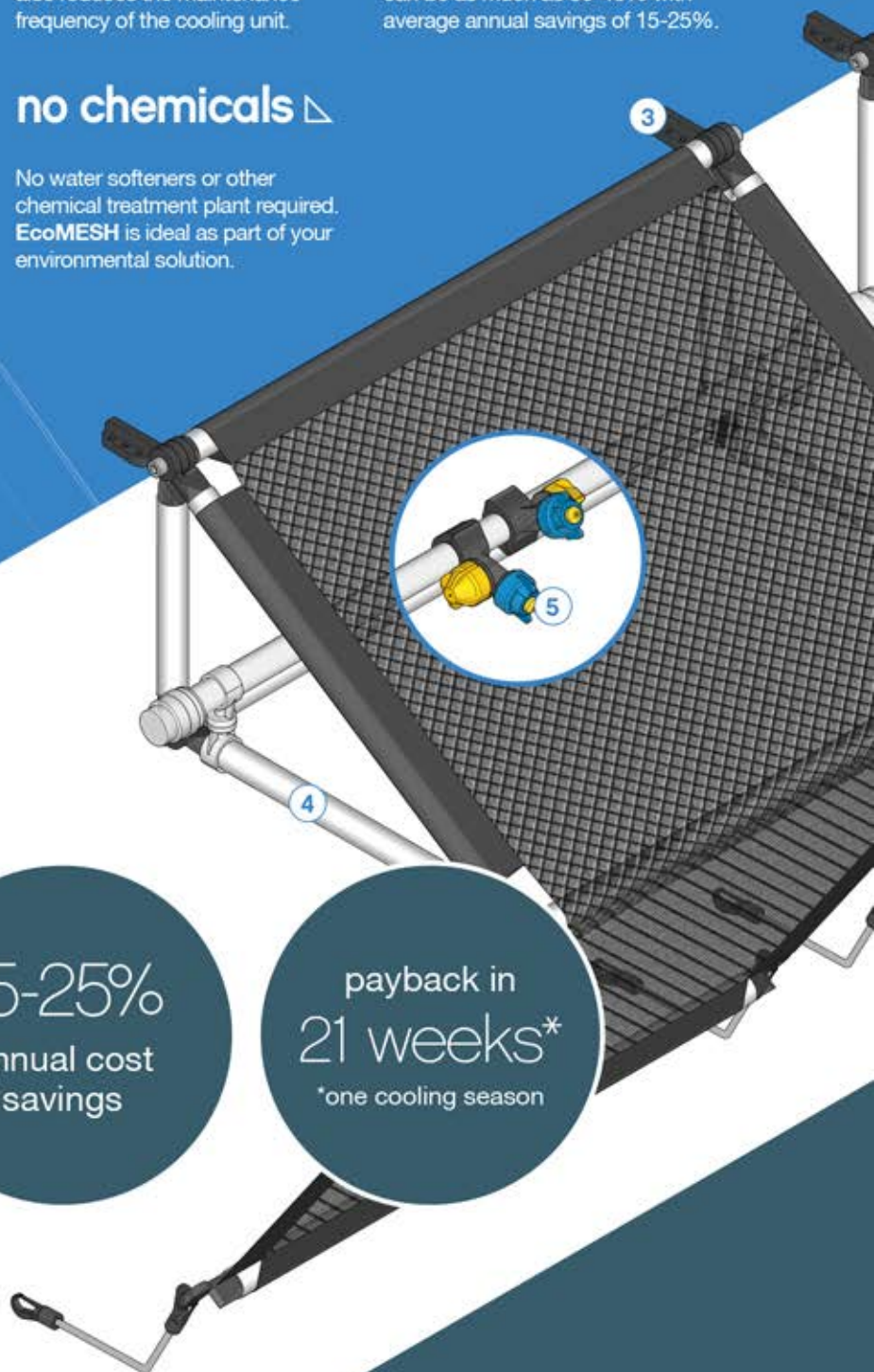
## easy retrofit ▽ no chemicals ▽

**EcoMESH** can be retro fitted to any model, make and size of air conditioning and refrigeration unit. It will not affect the manufacturers' warranty.

No water softeners or other chemical treatment plant required. **EcoMESH** is ideal as part of your environmental solution.

## better protection ▽

**EcoMESH** provides protection against snow and sand storms and provides additional shading properties.



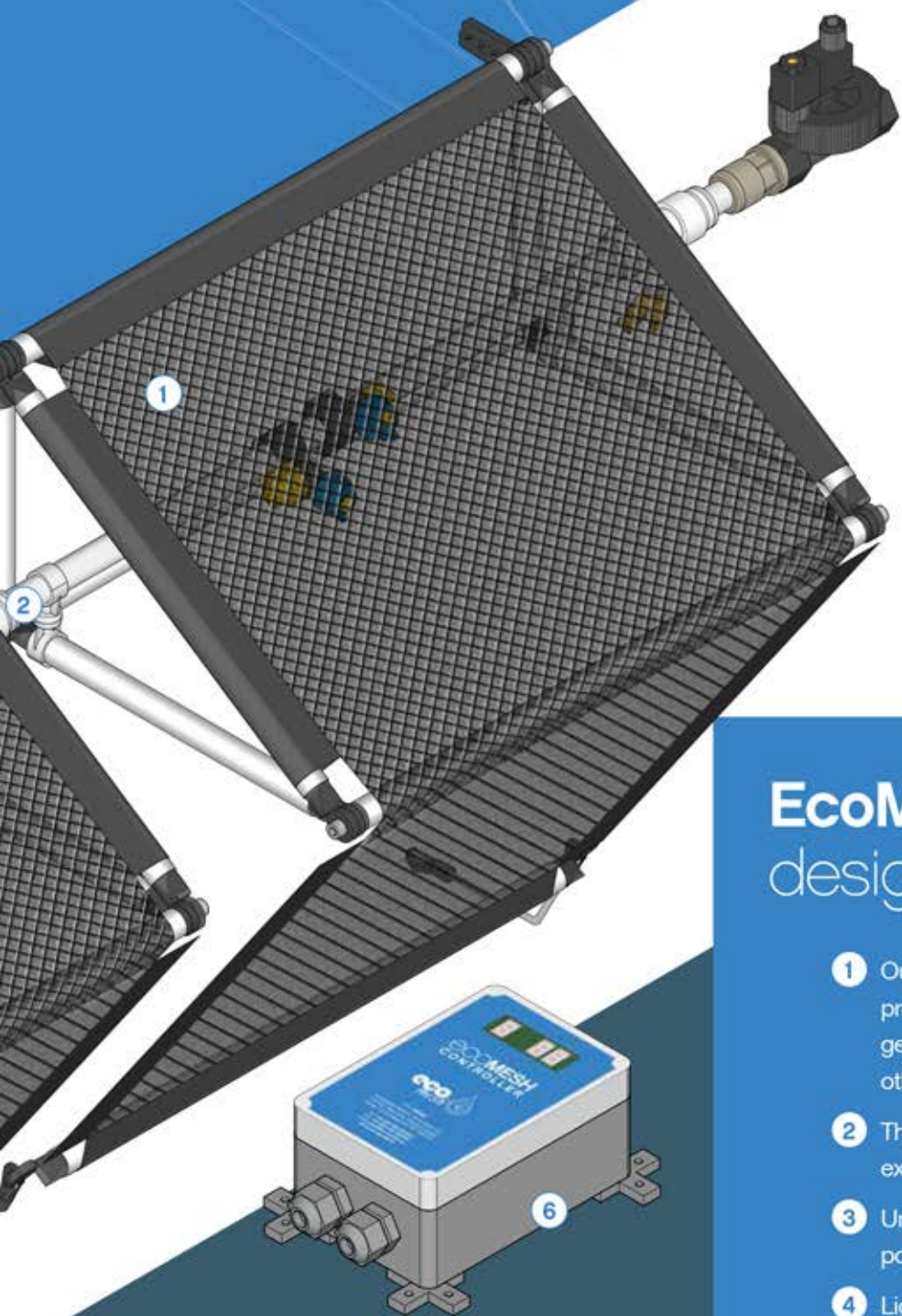
20-30%  
higher output  
for most  
systems

15-25%  
annual cost  
savings

payback in  
21 weeks\*

\*one cooling season





## minimised water use ▽

Water consumption is minimised as the spray is intermittent and only activated when required, hence it consumes 79% less water than any other wet systems.

## no health risks ▽

No still water reservoir design which eliminates health risks including Legionella from the use of coarse water as opposed to atomised droplets.

## EcoMesh design features:

- 1 Our unique, durable mesh will protect your unit from sand, dirt and general rubbish as well as snow and other elements.
- 2 The **EcoMesh** system can easily be extended to fit any cooler.
- 3 Unique fixing bracket for precise positioning during the installation.
- 4 Light weight aluminium frame for ease of construction and transportation.
- 5 Directional fine mist nozzle for even distribution of water.
- 6 **EcoMesh** Controller regulates the water supply according to the ambient temperature.

? **How much could you save?**

Visit [ecomesh.eu](http://ecomesh.eu) for an energy test.



# EcoMesh applications

The EcoMesh system for air cooled chillers, refrigeration, dry coolers and unitary units continue to meet with global success.

- Airports
- Supermarkets
- Datacentres
- Power/ Industrial Plants
- Air Conditioning
- Refrigeration
- Unitary
- Hotels
- Office Buildings



## Applied Manufacturers:

Aermec, Airedale, Bluestar, Carrier, CIAT, Climaveneta, Clivet, Daikin McQuay, Dunham-Bush, Emerson, Frimetal, Friterm, GEA, Heatcraft, Helpman/ Alfa-Laval, HIROSS, ICL, Lennox, LG, Liebert, Mitsubishi, RHOSS, Searle, SKM, Stulz, Toshiba, Trane, York, Zamil and many other makes around the World.

## End Users:

Supermarkets - ASDA, Tesco, Waitrose, Sainsbury and many more...

DataCentres - Equinix, DataXenter, T-Mobile, Cable & Wireless, Lloyds TSB, Sunguard and many more...

Hotels - Marriot, Hilton, Sheraton, Ibis, Holiday Inn and many more...

Others - McDonalds, GlaxoSmith Kline, Etisalat, BAA, Wrigley, Chelsea FC, Merck, Novartis, AzteQ, Norland, Invensys, Barilla, Arla, KISR, DEWA, Dubal, Ocado, Haramain Stations, MTR and many more...





**OffGrid Group of Companies**  
Sapphire Tower #109  
Deira Dubai, United Arab Emirates  
Tel +971 800 6487552

Email [info@OffGrid.ae](mailto:info@OffGrid.ae)  
[www.offgrid.ae](http://www.offgrid.ae)

